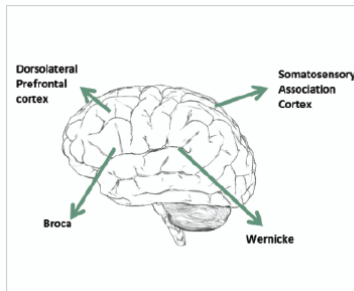


Neuronix Creates an Advanced AD Treatment Center In Your Clinic

Four Simple Steps:

An easy process with advanced technology for your practice and patients



1. Patient MRI

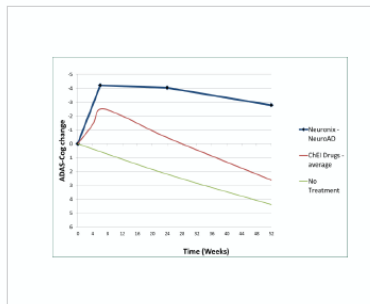
Identify target regions pre-treatment. Ensure mapped brain regions are precisely stimulated during treatment.



2. Patient Treatment

Concurrent Cognitive Training and rTMS targeted to the same brain regions.

6 weeks of 1-hour sessions (Monday-Friday), operated by your staff.



3. Patient Results

Rapid and sustained cognitive improvement that is far more impactful than Pharmaceutical options.



4. Patient Management

Assess and manage patient status over the course of a year. Re-enroll (as beneficial).

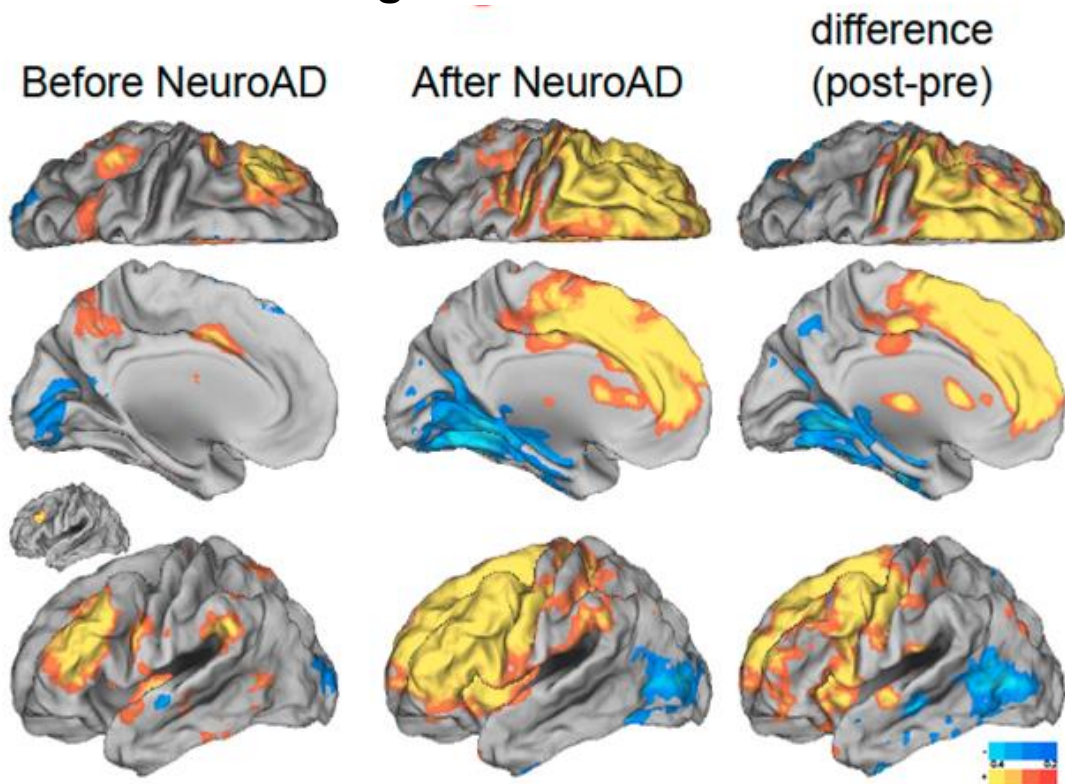
Neuronix (NeuroAD) in Alzheimer's Disease: Harvard Medical School Study

Alvaro Pascual-Leone, MD, PhD

Berenson-Allen Center for Noninvasive Brain Stimulation

Center for Brain Health, Beth Israel Deaconess Medical Center

Increased Brain Connectivity Following NeuroAD Treatment



“ It makes the brain circuits work better, and this leads to a striking improvement in cognitive abilities. ”

– Dr. Pascual-Leone, Harvard Medical